



# Everede /Nine9 Chamfer Mill Promo

850 West Hawthorne Lane • West Chicago, IL 60185

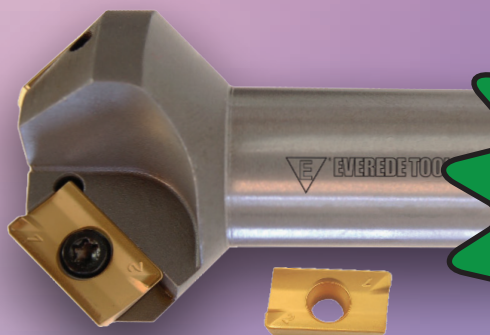
Phone: (331) 871-5214 • Toll Free: (800) 621-5486

[www.everede.net](http://www.everede.net)

## BENEFITS:

- Plunge
- Face Milling
- Circle Interpolated
- Chamfer

- One insert for the entire family of Chamfer Mills\*
- Best value in the industry
- Unbeatable prices



SAVE BIG

Over 25% Off

Use Promo Code : EP0621

Limited Time Only or While Supplies Last

Expires July 31st, 2021

Order By This Number



EDP NUMBER	DESCRIPTION	HOLDER	INCLUDED ANGLE	SHANK Dia	CHAMFER RANGE	CONTENTS	LIST PRICE	PROMO PRICE
02532	CHM-688-45/ MS	CHM-688-45	90°	3/4	.688 -1.471	(1) Holder (2) APLT-347-TL120 Inserts (1) Insert Wrench	<del>\$134.00</del>	\$110.00
02624	CHM-688-41/ MS	CHM-688-41	82°	3/4	.688 -1.414		<del>\$134.00</del>	\$110.00

\*Family of Chamfer Mills includes a variety of sizes and angles; from .5" to 2.25" with angles of 60°, 82°, 90° & 120° Visit us at [www.everede.net](http://www.everede.net).



## Chamfer Mill 45° >>

### ► Features >>

Ultra high speed and feed rate is the biggest advantage of Nine9 Chamfer Mills.  
It is not a traditional chamfer tool, it runs 4 times faster in cutting speed and 10 times higher in feed rate.  
It is the most efficient tool you ever met.

### ► Applications >>

- 90° counter sink and 45° chamfering.
- For counter sink, circular chamfering, contour chamfering and face milling.



## Screw Fit Cutter >> Not On Promotion

### ► Modular body style

- Quick and easy to change system and provides chamfering flexibility.
- Capable of extended overhangs by almost any kind of the screw-fit tool holder or extension bar in the market.

### ► Ultra high speed, high feed rate

- Dual-relief insert and optimized coating, higher feed rates and cutting speeds can be achieved on chamfering operations.



\*Screw on head also available but not on promotion

EDP NUMBER	DESCRIPTION	HOLDER	INCLUDED ANGLE	SHANK Dia	CHAMFER RANGE	CONTENTS	LIST PRICE	PROMO PRICE
02625	99616-C10/ MS	99616-C10	90°	12mm	7mm - 11mm	(1) Holder (4) N9GX04T0002-NC9071 Inserts (1) Insert Wrench	<del>\$233.09</del>	\$190.00
02626	99616-C20/ MS	99616-C20	90°	16.2mm	11mm - 16mm		<del>\$280.35</del>	\$225.00